

You make the difference. Easy Ways to Help

-  **Dispose of household hazardous waste properly.** Take motor oil, fuels, paints, solvents, cleansers, and pesticides to the Kalamazoo County Household Hazardous Waste Center, 1301 Lamont St. Call 269-373-5211 for hours.
-  **Maintain septic systems.** Have them checked every 2–3 years.
-  **Check fuel storage tanks for leaks.** Both aboveground and underground tanks can leak and contaminate water.
-  **Close abandoned wells properly.** Hire a licensed driller to plug unused wells.
-  **Wash cars away from storm drains.** Wash on the lawn if possible.
-  **Pick up pet waste.** Dispose of in trash or toilet.
-  **Compost yard waste.** Keep clippings and leaves out of the street.
-  **Test soil before fertilizing.** Apply only what's needed; phosphorus is banned unless soil shows deficiency.
-  **Landscape naturally.** Use native plants to reduce chemicals and water use.

City of Kalamazoo

1415 N Harrison Street
Kalamazoo MI 49007

Call 311



VISIT:

ProtectYourWater.net

for more information on **Illicit Discharges** and other water related information.

OR

SCAN HERE



City of Kalamazoo's Illicit Discharge Elimination Program (IDEP)



City of Kalamazoo Water Resources



Protect Your Water

Illicit discharge means pollution.

An **illicit discharge** is any substance entering the stormwater drainage system that isn't just rainwater. This includes intentional dumping, accidental spills, or improper connections to storm drains.



Sources of Illicit Discharges:

- **Chemical pollutants:** Motor vehicle fluids (e.g., oil, antifreeze), industrial or household hazardous wastes, and sewage.
- **Organic waste:** Grass clippings, leaf litter, and animal waste, which contribute to nutrient pollution and oxygen depletion in water bodies.
- **Commercial waste:** Restaurant grease or cleaning chemicals.
- **Other sources:** Pool wastewater (containing chlorine or other chemicals) and failing septic systems.

Environmental and Health Impacts:

- **Poor Water Quality:** Pollutants like oil, heavy metals, bacteria, and nutrients (from organic waste) can contaminate water bodies, leading to algal blooms, reduced oxygen levels, and harm to aquatic life.
- **Public Health Risks:** Contaminated water increases the risk of waterborne illnesses for people engaging in swimming, fishing, or other recreational activities.
- **Ecosystem Harm:** Toxic substances and nutrient overloads disrupt aquatic ecosystems, affecting fish, plants, and other organisms.

What to do if you think you see an Illicit Discharge in the City of Kalamazoo

When to call?

If you observe:

- ◊ Sewage or sewage odor on the ground or waterbody
- ◊ A strong or chemical odor near a storm drain, catch basin, inlet or outfall
- ◊ Someone dumping suspicious substances into drains or into a waterbody

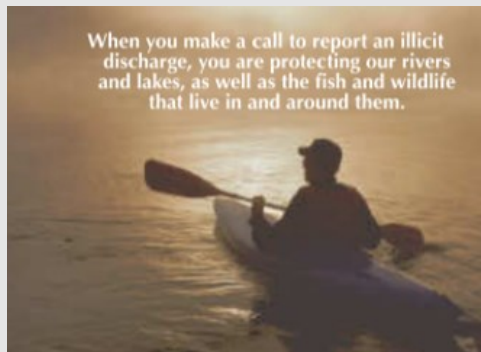
Who to call?

- ◊ Dial 311 if you are inside the city or 269-337-8000 during business hours
- ◊ Or dial the Environmental Programs Manager 267-337-8583
- ◊ If incident occurs at the Water Reclamation Plant (Wastewater Treatment Plant)
Dial: 269-337-8681
Address: 1415 N Harrison Street
Kalamazoo MI 49007

Be prepared to give the following information:

- ◊ Location of Complaint
- ◊ Source of pollution, if known
- ◊ Responsible party, if known
- ◊ Take a picture if you can. A picture is worth 1,000 words!
- ◊ Any other relevant information

When you make a call to report an illicit discharge, you are protecting our rivers and lakes, as well as the fish and wildlife that live in and around them.



"What Gets In the Street, Gets In the, Creek"

Storm sewers drain virtually everything from our lawns and streets directly into our local surface and groundwater. Because most storm water gets no additional treatment, we need to take extra care in what we allow to wash down the storm drains.

